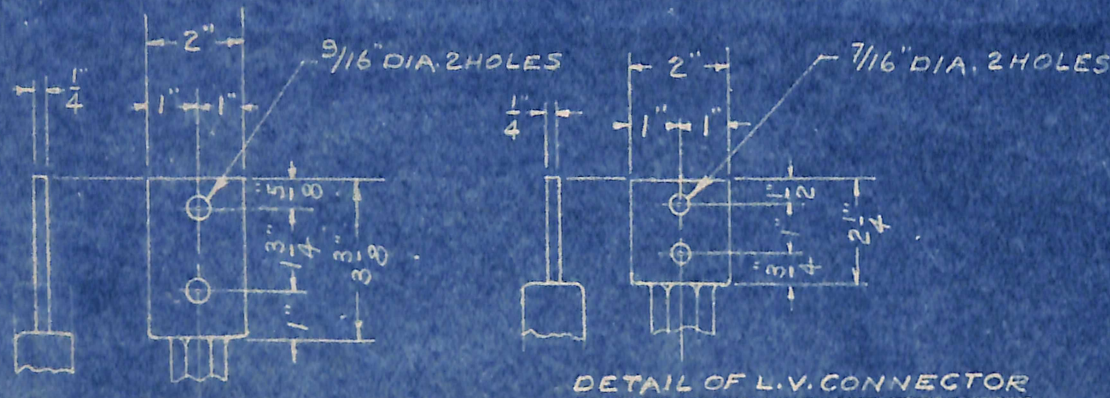
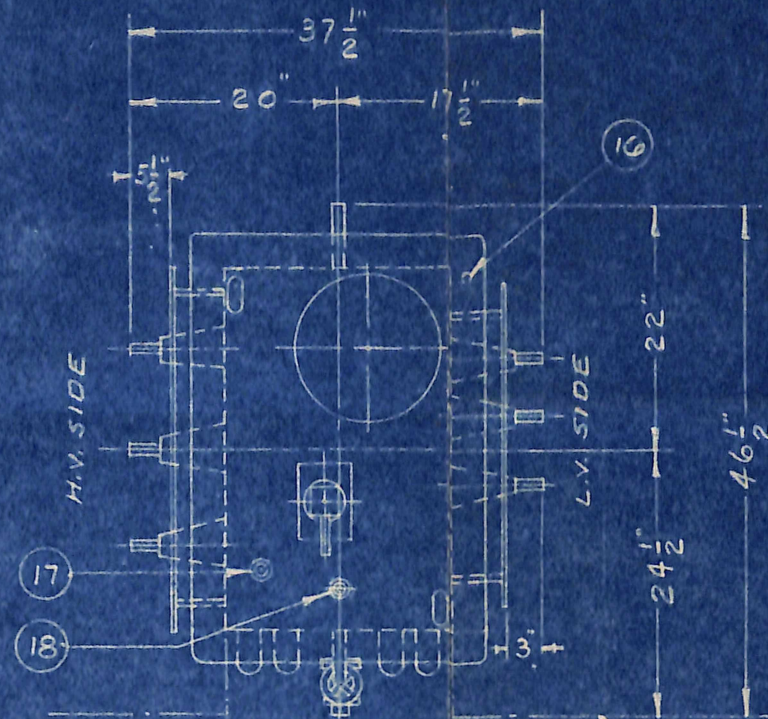
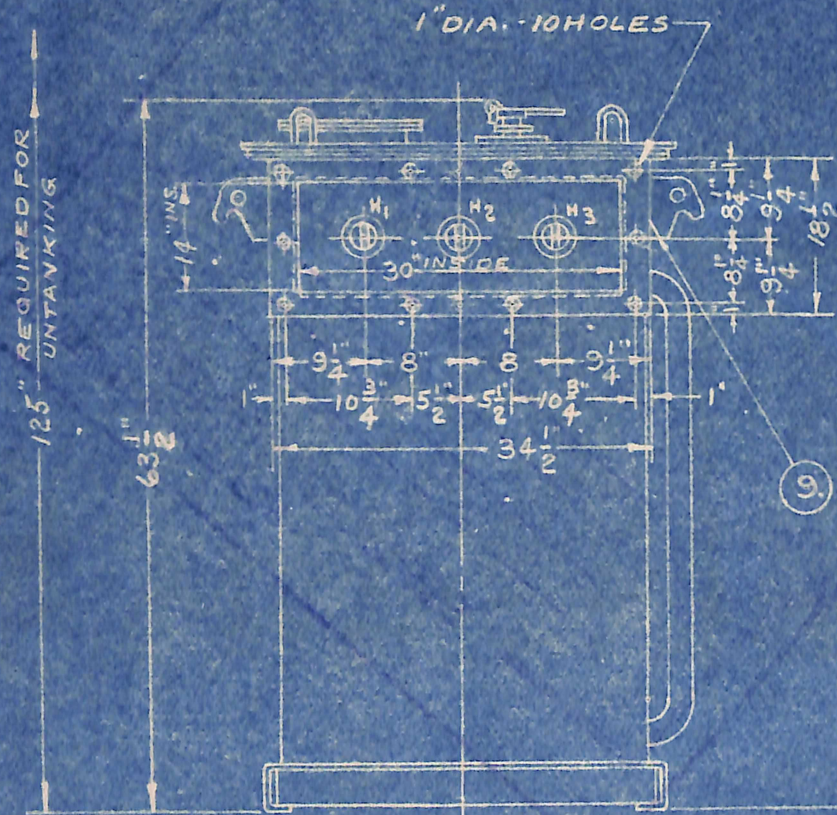


SEGREGATED WEIGHTS

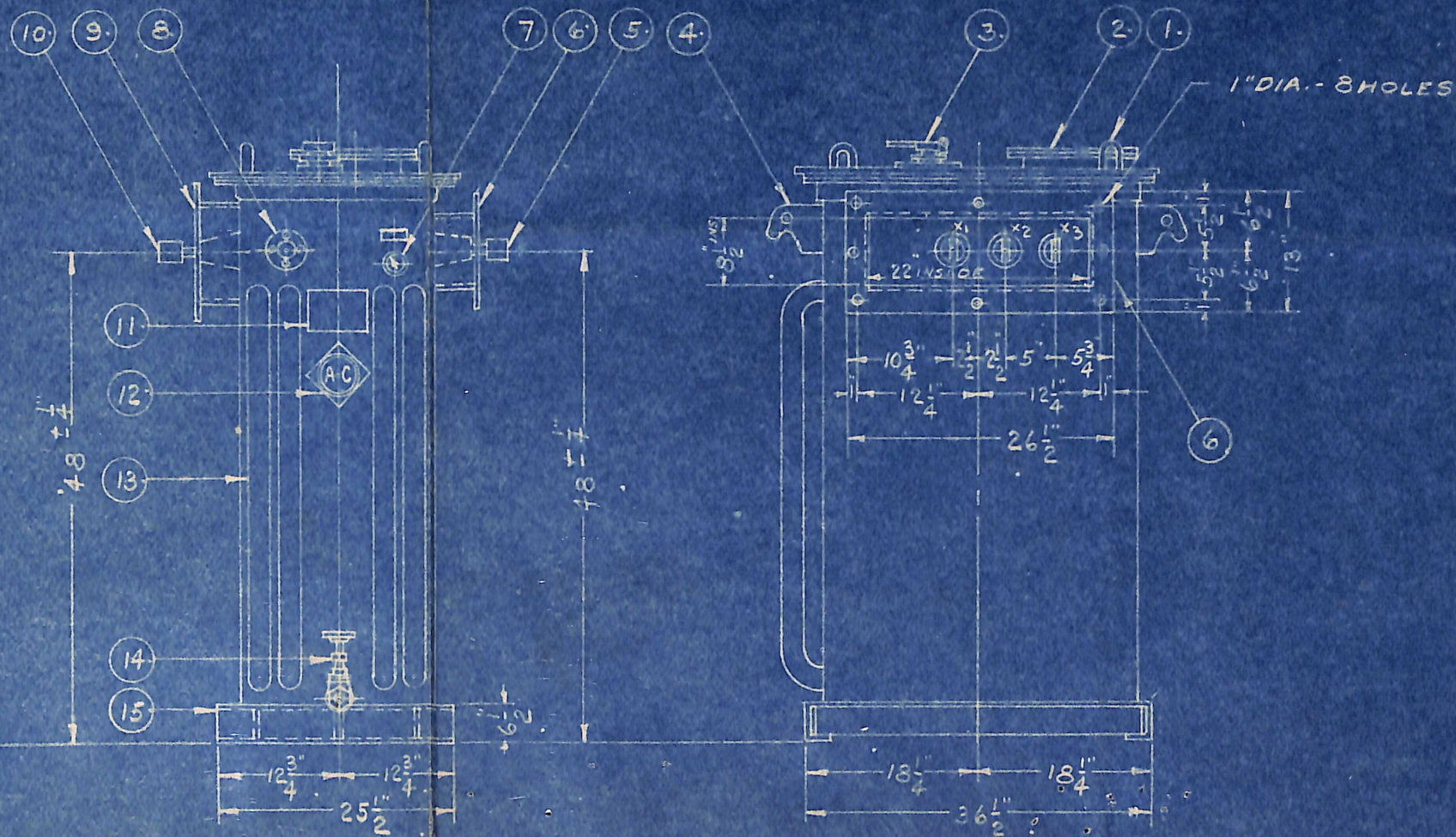
TRANSFORMER	---	950
CASE	---	870
OIL (121 GALS.)	---	910
TOTAL	---	2730 #



DETAIL OF H.V. CONNECTOR



SWITCHGEAR



- 1 2-LIFTING U'S FOR COVER
- 2 5/4" DIA. HANDHOLE
- 3 H.V. TAP CHANGER - TYPE RF
- 4 2 HOOKS FOR LIFTING ENTIRE TRANSFORMER
- 5 3-L.V. BUSHING - SEE DETAIL OF TERMINAL
- 6 L.V. THROAT
- 7 DIAL TYPE THERMOMETER
- 8 MAGNETIC TYPE OIL GAUGE
- 9 H.V. THROAT
- 10 3-H.V. BUSHINGS - SEE DETAIL OF TERMINAL
- 11 COMBINATION NAME & CONNECTION DIAGRAM PLATE
- 12 A-C TRADE MARK
- 13 TUBULAR RADIATORS
- 14 1" COMPLETE DRAIN FOR FILTERING & SAMPLING
- 15 OUTLINE OF BASE
- 16 1/2" GROUND BOLT IN BASE
- 17 1" TOP FILTER PRESS CONNECTION
- 18 PRESSURE TEST VALVE

ALLIS-CHALMERS MANUFACTURING COMPANY
PITTSBURGH WORKS
PITTSBURGH PENNSYLVANIA

DRAWN E.R.W.
TRACED
CHECKED O.K.
SIMILAR TO
SCALE

OUTLINE
100KVA 60CYC. 55CRISE
3PHASE LC TYPE
VOLTS (H.V. 3800V 4 TAPS
L.V. 220/440 V)

THE ROCKEFELLER FOUNDATION

16-17-47

ORDER 7-6100-30431
(2-6116-2130)
SPEC. 38911
CUSTOMER 44517

H-961541

**PRINT APPROVED FOR
CONSTRUCTION PURPOSES**

C.O. 114527

MILW.F.O. 1-1100-1484

PGH.F.O. 7-6100-30421 (21301)

DATE 6-17-47



ALLIS-CHILMERS MFG. CO.